

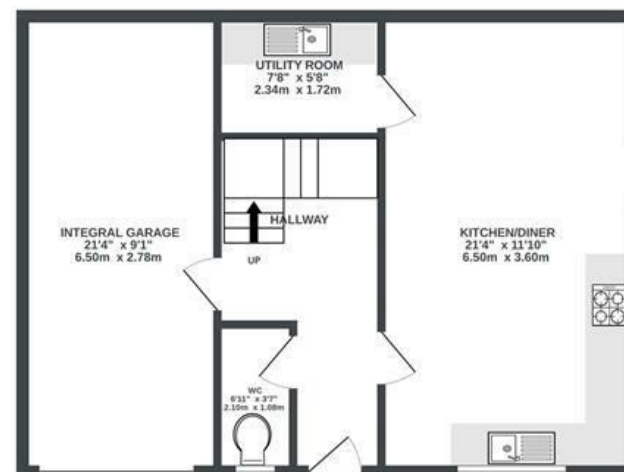
Dram Lane

ST GEORGE

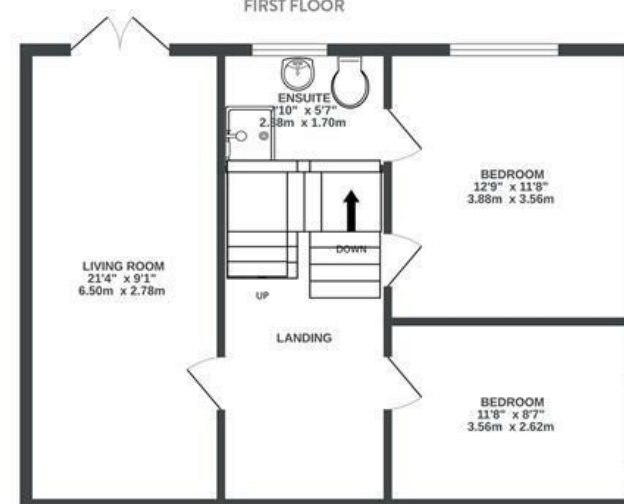
APPROXIMATE FLOOR AREA
152.1 SQM / 1637 SQFT



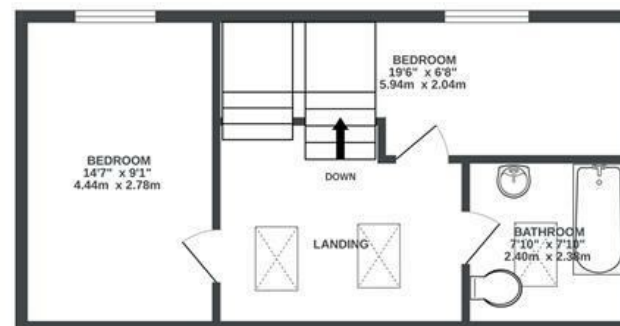
GROUND FLOOR



FIRST FLOOR



2ND FLOOR



Boardwalk

Dram Lane

, BRISTOL

£

£425,000

zzz

4 Bedrooms



BS5 8HD



3 Bathrooms

"It's a great place to live in such a secluded, peaceful and quiet neighbourhood. Our south facing garden is a haven of tranquillity, it's a great spot in the summer to enjoy a BBQ and the views. We get lots of wildlife: birds, badgers, foxes, bats. We often walk at Troopers Hill, Conham River Park and Dundridge Park with our dog. Visitors always compliment us on the location, we fell in love with the house and the views straight away and have loved our time here!"

